

DESCRIPTION

The new WICHITA Caliper brake is designed for medium duty to heavy duty stopping and holding applications.

FEATURES

- High torque and heat capacity
- Mechanical override facility on spring applied version
- Optional corrosion protection
- Easily replaceable friction pads
- Simple single face mounting
- Compact and robust design
- Self centering
- Self aligning pads
- Ease of installation

TYPICAL APPLICATIONS

- Wind turbines
- Heavy duty winches
- Motor holding brakes
- Propeller shaft braking
- Hoists and cranes
- General medium to heavy duty stopping and holding applications in a wide range of industries and applications

DESIGNATION

- Model CPS is a Caliper brake, Pneumatically applied and Spring released
- Model CSP is a Caliper brake, Spring applied and Pneumatically released, i.e. fail-to-safe operation
- Model CPS 24 has a maximum clamping force of 24 kN
- Model CPS 24/17 has a total tangential force of 17 kN

OPTIONS

- Up to four callipers may be mounted on a single disc.
- Size 24 may be specified to suit either 13 mm or 25 mm thick discs, size 38 is suitable for 25 mm thick disc only
- 25 mm discs available in four diameters, 600 – 1,500 mm
- 13 mm discs available with 600 mm and 900 mm diameters
- Customer may supply own disc, minimum recommended disc diameter is 600 mm

MOUNTING

- Base mounting standard, wall mounting optional
- If two callipers are to be mounted on a single disc, it is recommended that they are fitted at horizontally opposite positions

TORQUE

- Torque of CPS models is proportional to the air pressure
- Torque listed of CSP models is at zero pressure

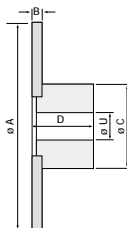
WICHITA - Bedford - UK, develops and manufactures pneumatic clutches, brakes and electronic web tension controls. It is part of WARNER ELECTRIC, manufacturers of industrial motion control products. Wichita has manufactured clutches and brakes in the UK since 1961 and its quality management system is approved to ISO 9001.

WICHITA - Bedford - UK, develops and manufactures pneumatic clutches, brakes and electronic web tension controls.

WICHITA is part of WARNER ELECTRIC, manufacturers of industrial motion control products. Wichita has manufactured clutches and brakes in the UK since 1961 and its quality management system is approved to ISO 9001.

DISCS

- Options
- Hubs with:
- Ringfeder locking
 - Large bores



A	B	C	D	U min	U max
600 mm	13	300	210	50	175
600 mm	25	300	210	50	175
900 mm	13	300	210	50	175
900 mm	25	300	210	50	175
1200 mm	25	450	300	100	300
1500 mm	25	450	300	100	300

Heat rating Thermische Leistung	[kW]	(Solid disc) (Massive Scheibe)			
		600 mm	900 mm	1200 mm	1500 mm
24/17 & 24/15 38/27 & 38/24 max. [min-1]	4.1 1430	8.2 960	14 720	26 570	

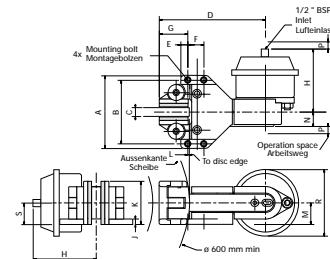
Max. engagement speed = 30 m/s
Max. zulässige Umfangsgeschwindigkeit = 30 m/s



TECHNICAL DATA

Mounting / Anbau

Size / Grösse 24: 4 x M12
Size / Grösse 38: 4 x M16



Pneumatic applied / Pneumatisch betätigt

	A	B	C	D	E	F	G	H	J	K	L	M	N	P	R	S
CPS 24/17	208	178	25/13	295	19	45	79	177	15	120	4	60	40	20	185	63
CPS 38/27	246	210	25	342	18	60	85	187	18	160	8	80	47	25	209	73

Spring applied / Federkraftbetätigt

CSP 24/15	208	178	25/13	295	19	45	79	357	15	120	4	60	40	20	185	63
CSP 38/24	246	210	25	342	18	60	85	401	18	160	8	80	47	25	209	73

Pneumatic applied / Pneumatisch betätigt

	Tangential Force Tangentalkraft [kN]	Dynamic Torque for Disc dia [mm] Dynamisches Drehmoment für Scheibe der Größe [mm] [Nm] @5.5 bar				Weight Gewicht [kg]
		600	900	1200	1500	
CPS 24/17	16.8	4320	6840	9360	11880	30
CPS 38/27	26.6	6840	10800	14800	18800	48
Max. Disc Speed Max. Drehzahl der Scheibe	[min-1]	1430	960	720	570	

Spring applied / Federkraftbetätigt

	Tangential Force Tangentalkraft [kN]	Dynamic Torque for Disc dia [mm] Dynamisches Drehmoment für Scheibe der Größe [mm] [Nm] @ 0 bar				Weight Gewicht [kg]
		600	900	1200	1500	
CSP 24/15	14.7	3780	5980	8190	10390	35
CSP 38/24	23.8	6120	9690	13260	16830	56
Max. Disc Speed Max. Drehzahl der Scheibe	[min-1]	1430	960	720	570	

Notes:

CPS ratings represent full brake capacity. For general stopping and holding duty use 75% of rating. For tensioning duty use full torque capacity.

CSP ratings represent full brake capacity with 2 mm wear. For general stopping and holding duty use 75% of rating.

Torque per caliper on stated disc diameters

